

# 390 HTC

---

Galeon 390 Htc offers exciting performance and flawless design as one the third generation models.

Based on the hull of the successful 380 Fly, the hardtop offers a distinguishable, sporty exterior matched by its quality interior. A huge glass roof, 390 Htc's most prominent feature, flushes the main deck with natural light and opens with a touch of a button.

With the roof out of the way everyone on board can enjoy the breeze and sunshine as they cruise along.

The transformable aft settee occupies the cockpit space, and can be quickly turned into a large sun lounger to fully utilize the retractable sunroof above. Wide side decks lead to the bow leisure area complete with two mattresses best suited for sunbathing.

The cockpit doors slide with ease to reveal a bright and welcoming interior of the main deck. The saloon is surrounded by windows and holds a helm station, galley and dinette, plus plenty of stow away space.

Several interior design lines, with a choice of fabrics and a long list of additional equipment

will allow to create endless variations to suit all needs and purposes. Below deck, two or three guest cabins are located along a separated head and shower facilities for extra privacy and comfort.

A wide variety of engines completes the package that is sure to please both sport enthusiasts as well as fans of relaxed cruising.



Exciting design matched by flawless performance



The roof over the cockpit is retractable



Cockpit seating turned into a sundeck



390 Htc

The saloon is well lit due to the abundance of windows and a large sunroof above the helm

The dinette is moved back



A well equipped galley



Up to three cabins down below

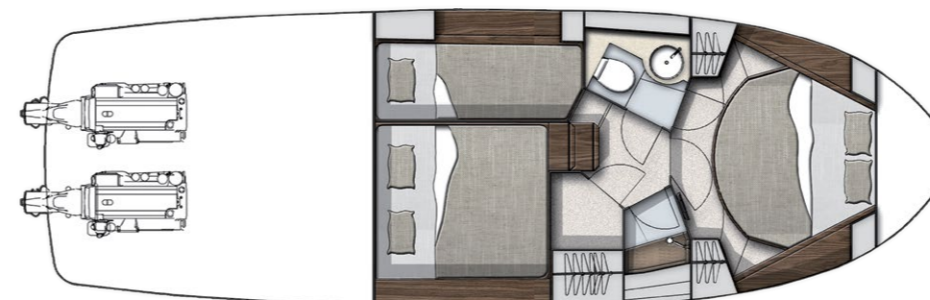


The owner's quarters

# 390<sup>HTC</sup>

# FLAWLESS DESIGN

## LAYOUTS



## TECHNICAL SPECIFICATION

Length of the hull	[m]	11,70	[ft]	38'5"
Length overall	[m]	11,99	[ft]	39'4"
Beam of the hull	[m]	3,66	[ft]	12'
Beam overall	[m]	3,74	[ft]	12'3"
Draft max. (canoe body)	[m]	0,81	[ft]	2'8"
Fuel tank capacity	[dm <sup>3</sup> ]	2 x 500	[US Gal]	2 x 132
Water tank capacity	[dm <sup>3</sup> ]	500	[US Gal]	132
Mass of Light Craft Condition	[kg]	9700*/10770**	[lbs]	21385*/23744**
Maximum Load	[kg]	2580	[lbs]	5688
Min. engine (-s) power	[kW/HP]	2 x 162 / 220		
Max. engine (-s) power	[kW/HP]	2 x 294/400* / 2 x 320/435**		
Crew limit		10		
Category		B		

\*sterndrive \*\*shafts

3<sup>RD</sup> GALEON  
GENERATION

CASTRO  
YACHT DESIGN

VOLVO  
PENTA