

# 380 FLY

---

The 380 Fly shares similarities with the distinctive line of the third generation Galeon yachts yet remains original and recognizable.

The yacht's sporty silhouette quickly catches the eye with its hull-length windows, aggressive lines and ample flybridge. Outside, the aft-facing sundeck welcomes you with a transformable, fold-out settee with adjustable lumbar support.

The generous side decks and practical handrails are great for crew while mooring and sailing rough seas.

Follow them to the bow sundeck with conveniently placed cup holders and a regulated headrest for additional back support. Up top, the foldable radar arch and mast allow for an easier passage under bridges and other obstacles.

The glass doors in the cockpit slide to reveal a cozy salon suffused with natural light thanks to the drop down windows and a slightly tilted windshield made from a single sheet of glass.

The design team has dedicated a tremendous effort to make the interior as bright and welcoming as possible. On the main deck find a comfortable dinette, helmsman's station and a galley that can be moved down below in the two-cabin version.

A plethora of interior design options with a choice of high-quality natural woods will allow you to fully customize the yacht to suit your needs. Down below, find up to three cabins with a separated shower and toilet to ensure comfort and privacy.

The bow owner's cabin is well lit, thanks to a skylight with an integrated hatch and offers numerous storage compartments. Exceptional design, pure comfort and ultimate convenience - the 380 FLY has it all.





Wide steps lead to the top deck from the cockpit



Double seat at the top steering station



The sizable flybridge of the 380 Fly



380 Fly

The saloon is located on the main deck and features a dinette and galley



A galley, dinette and helm station can be found in the saloon



Guest rest area on the main deck



Separate head and shower down below

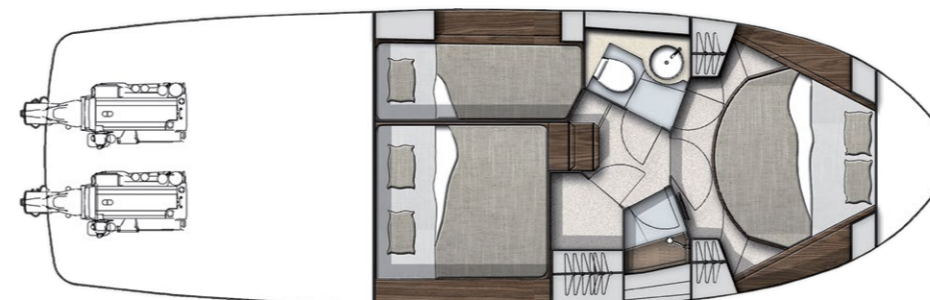


Forward owner's cabin

# 380 FLY

# AN ABUNDANCE OF LIGHT

## LAYOUTS



## TECHNICAL SPECIFICATION

Length of the hull	[m]	11,70	[ft]	38'5"
Length overall	[m]	11,99	[ft]	39'4"
Beam of the hull	[m]	3,66	[ft]	12'
Beam overall	[m]	3,74	[ft]	12'3"
Draft max. (canoe body)	[m]	0,81	[ft]	2'8"
Fuel tank capacity	[dm <sup>3</sup> ]	2 x 500	[US Gal]	2 x 132
Water tank capacity	[dm <sup>3</sup> ]	500	[US Gal]	132
Mass of Light Craft Condition	[kg]	9700*/10770**	[lbs]	21385*/23744**
Maximum Load	[kg]	2580	[lbs]	5688
Min. engine (-s) power	[kW/HP]	2 x 162 / 220		
Max. engine (-s) power	[kW/HP]	2 x 294/400* / 2 x 320/435**		
Crew limit		10		
Category		B		

\*sterndrive \*\*shafts

3<sup>RD</sup> GALEON  
GENERATION

CASTRO  
YACHTS

VOLVO  
PENTA