

GALEON 335 HTS



www.royalyachting.ae

GALEON 335 HTS

GALEON
YACHTS
EXCLUSIVE UAE DEALER



BRAND NEW YACHT




335 HTS


The 335 HTS joins the cruiser lineup of the Third Generation Galeon models and further improves on the already impressive performance and handling characteristics of the sporty 325 series it was based on. With upgrades to the hull design, layout and general aesthetics it truly warrants consideration as one of the premiere models in the segment.

Meet this new, stunning cruiser with commendable performance, a variety of clever features and a design to match. Based on one of our all-time best sellers, it manages to improve on it in every single area!



FOR MORE INFORMATION CONTACT ROYAL YACHTING

 +971 (0) 4 399 6399

 +971 (0) 50 467 4113 / Sales Manager

 www.royalyachting.ae

 emirates@royalyachting.ae















OAK



OAK



OAK



OAK



OAK



OAK



OAK



OAK



OAK



OAK



OAK



OAK



OAK



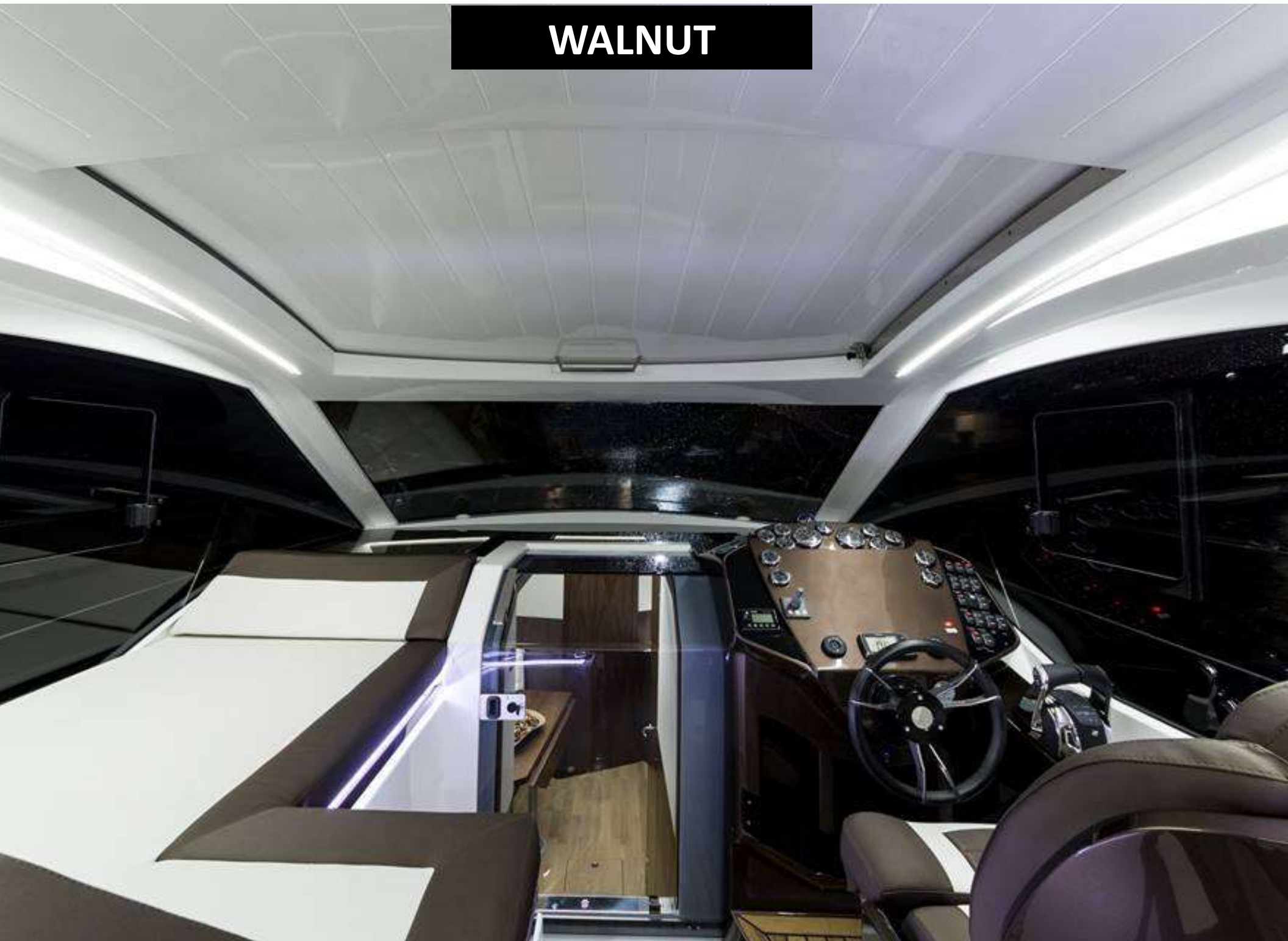
WALNUT



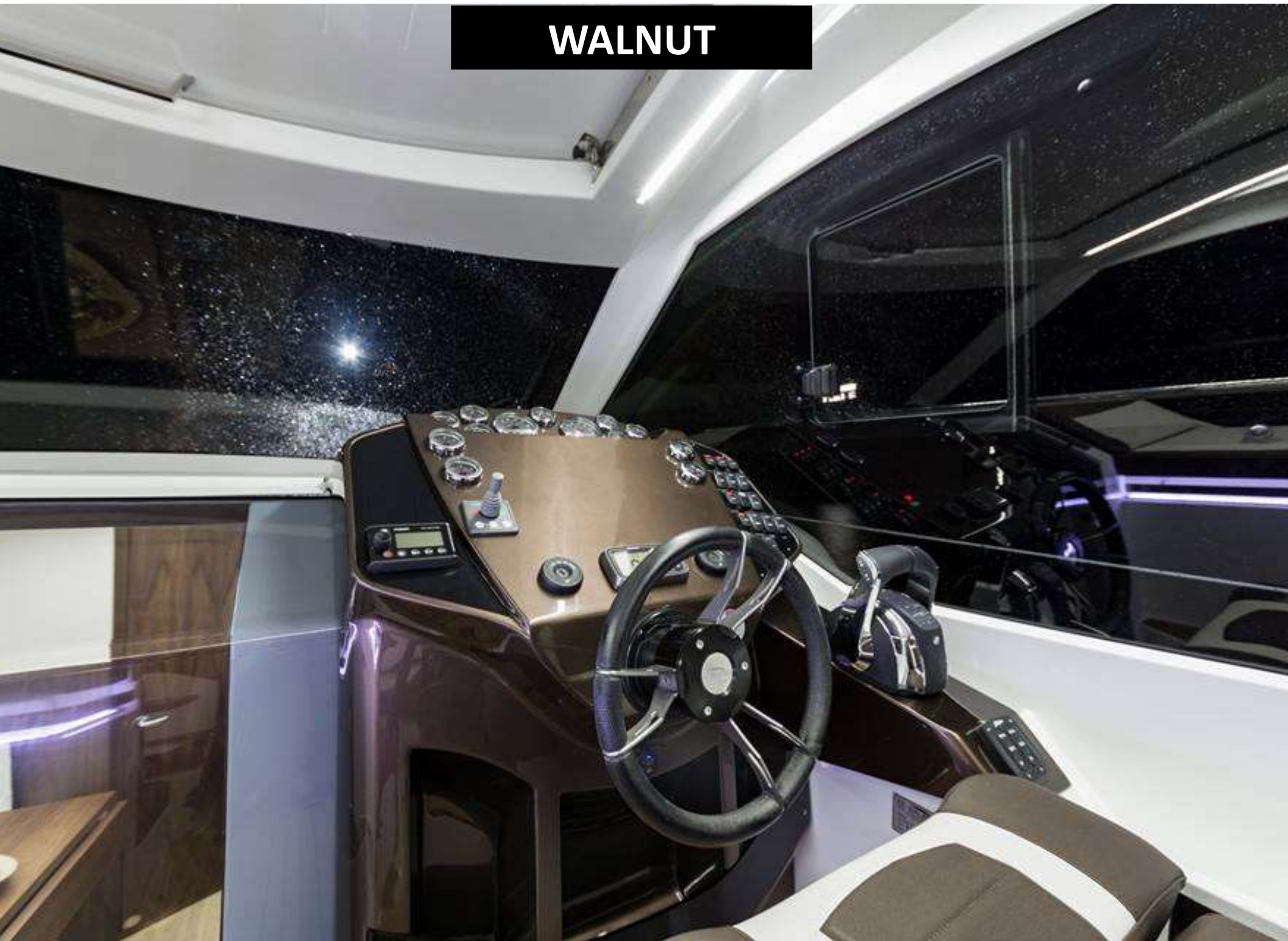
WALNUT



WALNUT



WALNUT



WALNUT



WALNUT



WALNUT



WALNUT



WALNUT



WALNUT



WALNUT



WHITENED OAK



WHITENED OAK



WHITENED OAK



WHITENED OAK



WHITENED OAK



WHITENED OAK

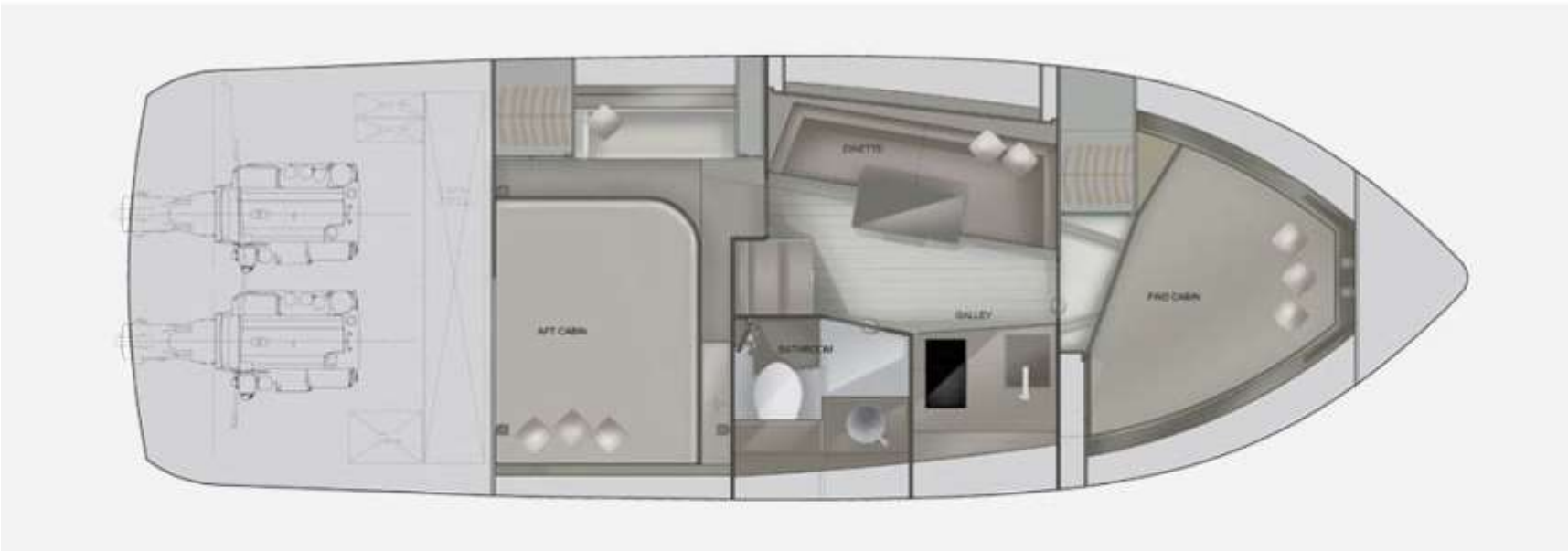
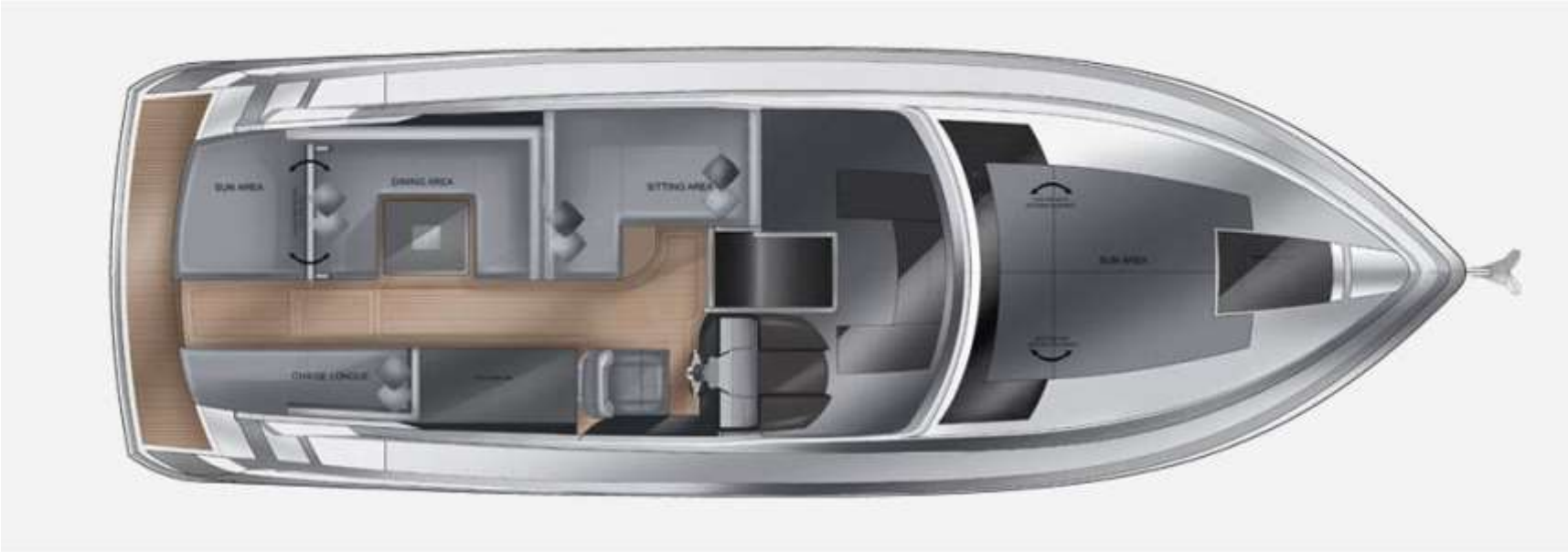


WHITENED OAK



WHITENED OAK





S P E C I F I C A T I O N

Length of the hull	[m]	9.98	[ft]	32'9"
Length overall	[m]	10.20 / 10.90	[ft]	33'6" / 35'9"
Beam of the hull	[m]	3.30	[ft]	10'9"
Beam overall	[m]	3.35	[ft]	11'
Draft max. (canoe body)	[m]	0.86	[ft]	2'10"
Fuel tank capacity	[dm ³]	630 or 750	[US Gal]	166 or 198
Water tank capacity	[dm ³]	215	[US Gal]	57
Mass of Light Craft Condition	[kg]	5892	[lbs]	12990
Maximum load	[kg]	1800	[lbs]	3968
Min. engine (-s) power	[HP]	2 x 4.5 MPI		
Max. engine (-s) power	[HP]	2 x 270 DPI		
Crew limit		8		
Category		B		