



## Dubai Marine 55 2008

### BOAT DETAILS

Type of Boat :	Fly Bridge
Boat Builder :	Dubai Marine
Model :	55
Year :	2008
Hull Materials :	GRP
Lengh Overall :	16.7 Meters
Beam :	4.26Meters
Draft :	TBC Meters
Displacement :	20 Ton
Location :	Dubai

**\*THE BOAT'S HULL IS DAMAGED AND IS IN NEED OF REPAIR AND  
MAINTENANCE\***

# CALL FOR THE PRICE!!

**\*Note: The owner will consider all serious offers\***

Keep your mind free.  
Call Royal Yachting at

## Description

Dubai Marine 55 is a real piece of art, primarily painted black with white sides and with the special touch of creative interior designers to increase your space. On Duretti 55 your life evolves in a stylish and luxurious white and wood atmosphere. A modern design is completed with ceiling spotlights, reading lights, LCD TV, and radio system.

### BOAT DETAILS

Type of Boat :	Fly Bridge
Boat Builder :	Dubai Marine
Model :	55
Year :	2008
Hull Materials :	GRP
Lengh Overall :	16.7 Meters
Beam :	4.26 Meters
Draft :	TBC Meters
Displacement :	20 Ton
Fuel Tanks Capacity :	2271 Liters
Fresh water Capacity :	TBC Liters
Location :	Dubai

### LAYOUT

Main Saloon :	Yes
Main Saloon Convertible :	No
Number of Cabins :	3
Number of berths :	6
Number of Heads :	2
Crew Cabin :	1

### EQUIPMENTS

BBQ Grill :	Yes
Water Maker :	Yes
Black Water :	Yes
Outside Shower :	Yes
Water Heater :	Yes
Dish Washer :	No
Washing Machine :	No
Stove(s) :	Yes
Oven :	Yes
Microwave :	Yes
Fridge :	Yes
Freezer(s) :	Yes
Icebox :	Yes

### MECHANICAL DETAILS

Engine :	Volvo Penta
Engine Power :	2 x 575 HP
Engine Hours :	1200 Approx.
Fuel Type :	Diesel
Propulsion :	Shaft Drive
Maximum speed :	25 knots
Cruising speed :	20 knots
Generator :	Yes
Generator Details :	Onan
Air conditioning :	Yes
Air Conditioning Power :	TBC
Battery charger :	Yes
Shore Power :	Yes

### ELECTRONICS

Compass :	Yes
Heel repeater :	Yes
Chartplotter :	Yes
GPS :	Yes
Autopilot :	Yes
Navtec :	No
Radar :	Yes
VHF :	Yes
Satellite TV System :	No
TV/DVD :	Yes

### ACCESSORIES

ACCESSORIES	
Helipad :	No
Bimini Top :	Yes
Cockpit table :	Yes
Windlass :	Yes
Trim Tabs :	Yes
Bow thruster :	Yes
Platform :	Yes
Swimming Ladder :	Yes
Davit :	Yes
Teak Flooring :	Yes
Sundeck :	Yes

**Comments:** The boat's hull is damaged and is in need of repair and maintenance , the owner will consider serious offer.

**DISCLAIMER :** In this transaction we are acting as Brokers only. Whilst every care has been taken in their preparation, the correctness of these particulars is not guaranteed. The particulars are intended as a guide only and they do not constitute a term of any contract. A prospective buyer is strongly advised to check the particulars and where appropriate to have the vessel fully surveyed and inspected.

www.royalyachting.ae





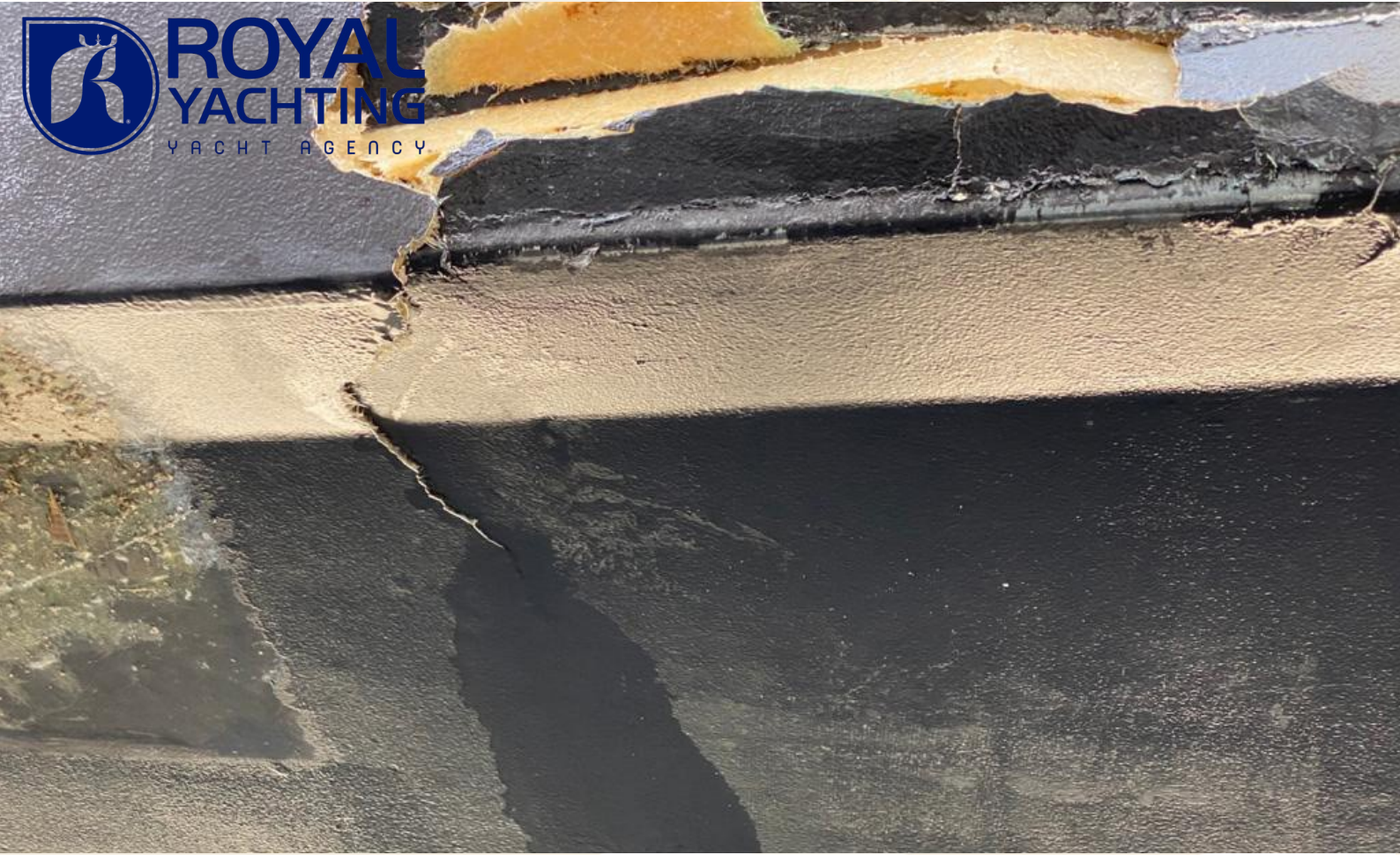
















































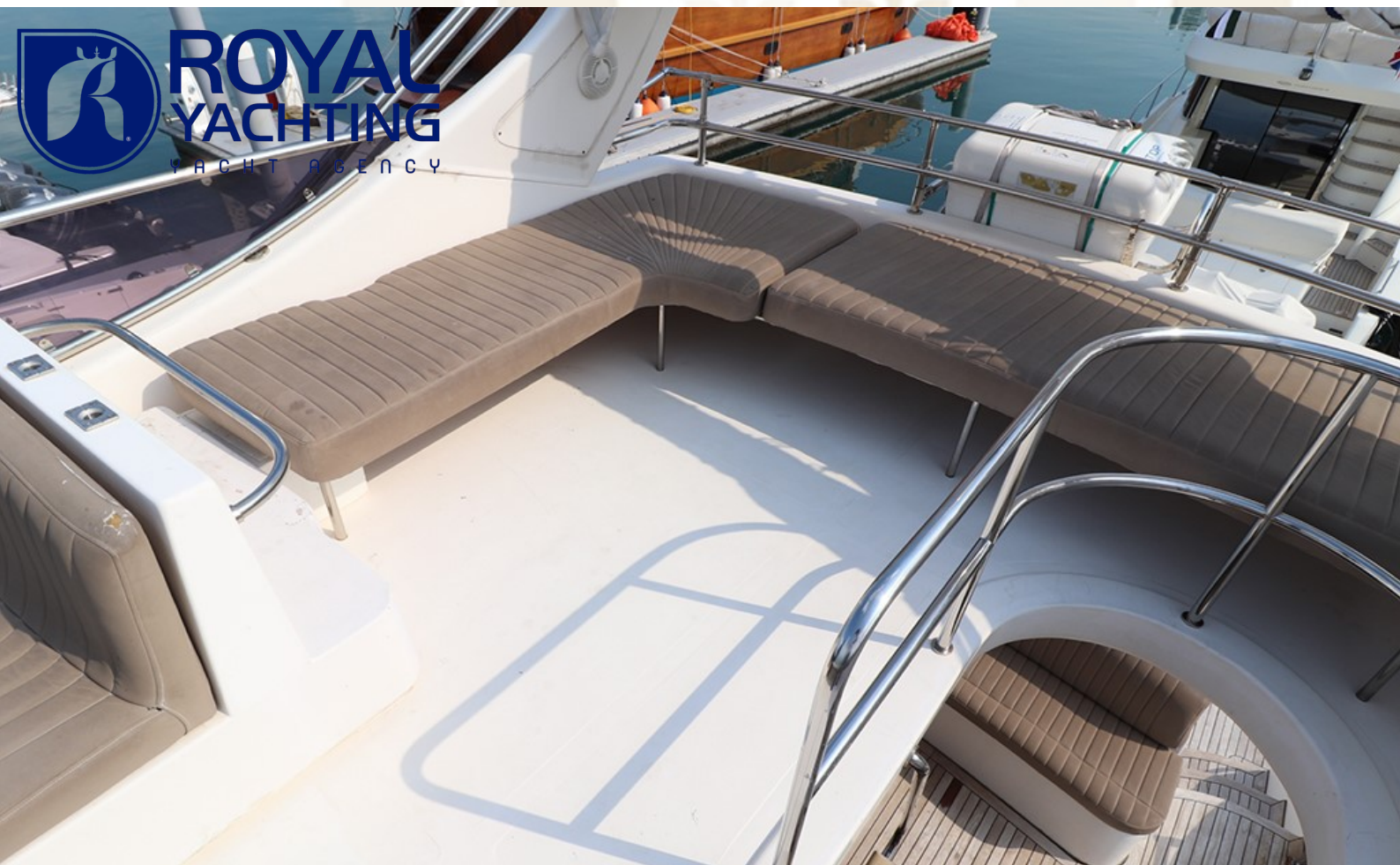
















**DISCLAIMER :** In this transaction we are acting as Brokers only. Whilst every care has been taken in their preparation, the correctness of these particulars is not guaranteed. The particulars are intended as a guide only and they do not constitute a term of any contract. A prospective buyer is strongly advised to check the particulars and where appropriate to have the vessel fully surveyed and inspected.