



JAS MARINE 50 FT HOUSEBOAT 2025



JAS MARINE 50FT HOUSEBOAT 2025



www.royalyachting.ae


YACHT FOR SALE | JAS MARINE 50FT HOUSEBOAT 2025


BUILDER:	JAS MARINE
BUILT:	2025
LENGTH OVERALL:	16.5 METERS
BEAM:	4.60 METERS
DRAFT:	0.8 METERS
STATEROOMS:	2 CABINS
GUESTS:	4 BERTHS
FLAG:	UAE
HULL MATERIAL:	GRP

PRICE: 1,200,000 AED



FOR MORE INFORMATION CONTACT ROYAL YACHTING

 +971 (0) 4 399 6399

 +971 (0) 50 467 4113 / Sales Manager

 www.royalyachting.ae





BOAT DETAILS

Type of Boat:	House Boat
Boat Builder:	Jas Marine
Model:	50ft Houseboat
Year:	2025
Hull Material:	GRP
Length Overall:	16.15 Meters
Beam:	4.6 Meters
Draft:	0.8 Meters
Displacement:	TBC TON
Fuel Capacity:	600 Gallons
Fresh Water Capacity:	150 Gallons
Location:	Ajman

MECHANICAL DETAILS

Engine:	Yamaha
Engine Power:	2 x 200 HP
Engine Hours:	TBC
Fuel Type:	Petrol
Propulsion:	Outboard
Maximum Speed:	30 knots
Cruising Speed:	20 knots
Generator:	Yes
Generator Details:	25kW
Battery Charger:	Yes
Shore Power:	Yes

ELECTRONICS

Compass:	Yes
Heel Repeater:	No
Chartplotter:	Yes
GPS:	Yes
VHF:	Yes
Sound System:	Yes
TV/DVD:	Yes

ACCESSORIES

Hard Top:	Yes
Cockpit table:	No
Windlass:	Yes
Bow thruster:	Yes
Stern Thruster:	No
Platform:	Yes
Swimming Ladder:	Yes
Teak Flooring:	Yes
Sundeck:	No
Tender:	No

EQUIPMENTS

Black Water:	Yes
Outside Shower:	Yes
Dish Washer:	Yes
Stove(s):	Yes
Microwave:	Yes
Fridge:	Yes
Freezer(s):	Yes
Under Water Lights:	Yes

LAYOUT

Main Saloon:	Yes
Saloon Convertible:	No
Number of Cabins:	2
Number of berths:	4
Number of Heads:	3

COMMENTS :

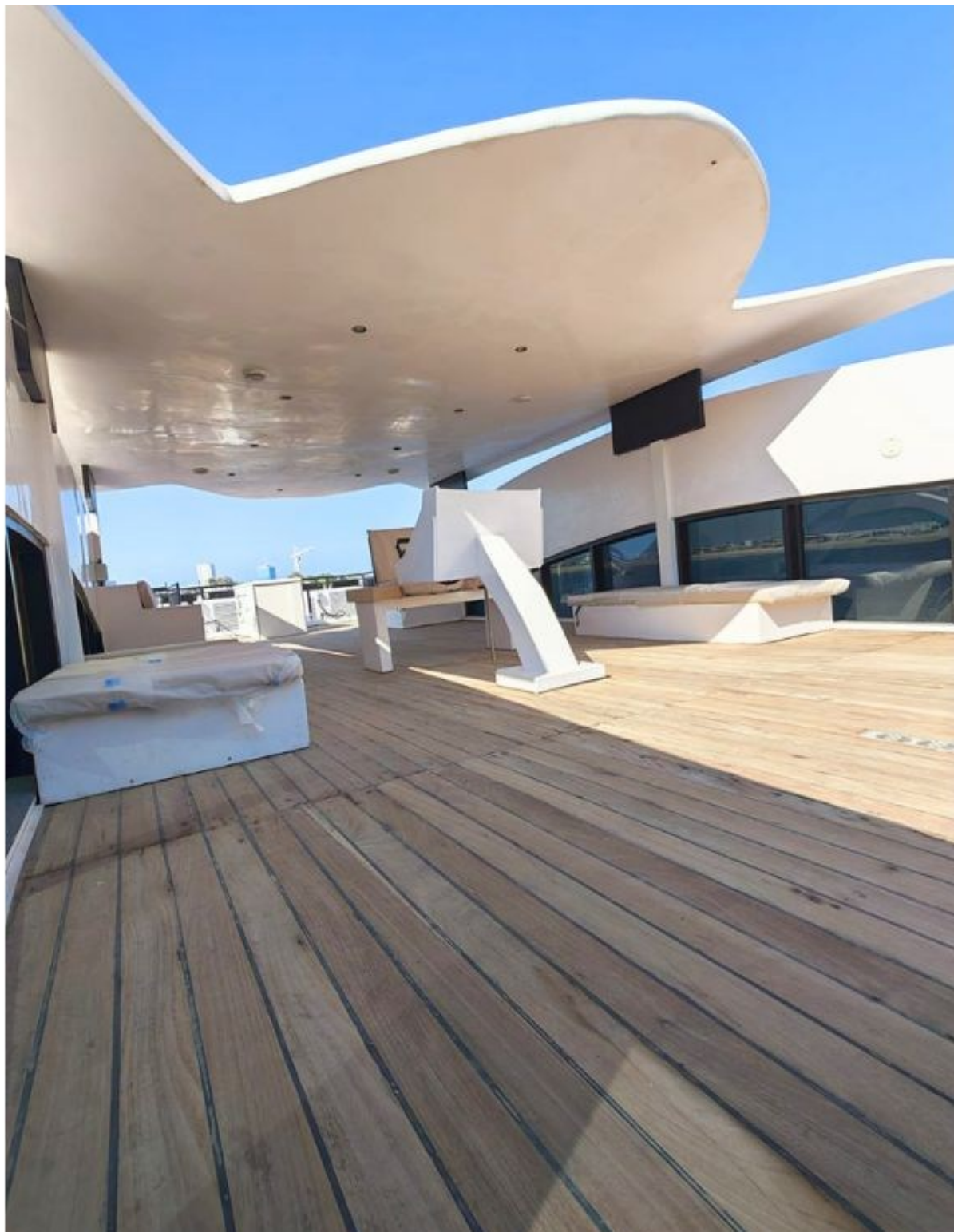
The boat is a brand new boat.
 The boat is equipped with accessories and equipment such as:

- 2 Guest rooms, 3 toilet, deck galley with seating area, main cabin with seating area fully furnished
- Fly bridge with Control Station
- Anchor winch 2300Watts (Quick), 15kg anchor, 50mtr chain
- LED TV Home theatre in the saloon area
- Navigation lights, Anchor lights, Deck lights and remote controlled Search light
- 2 Aluminum entrance aft door
- Burma teak wood on the platform area the aft settee area
- Dual Marine Horn
- Non-skid pattern on the deck and fly bridge for safety reasons
- Fuel vapor exhaust system and ventilation
- Natural aspiration ventilation system for the engine
- Water system and deck wash system
- Fuel and water tank ventilation system
- Air condition system
- Generator 25KW
- Navigation Equipments
- Bow Thruster - Vetus
- Audio System in the saloon and fly bridge
- Hot plate
- Shore power cable with plug
- Under Water lights
- All deck and hull fittings
- Battery charger system
- Batteries for the engine is separated from the boat electrical
- Twin Yamaha 200HP Outboard Engines

DISCLAIMER : In this transaction we are acting as Brokers only. Whilst every care has been taken in their preparation, the correctness of these particulars is not guaranteed. The particulars are intended as a guide only and they do not constitute a term of any contract. A prospective buyer is strongly advised to check the particulars and where appropriate to have the vessel fully surveyed and inspected.

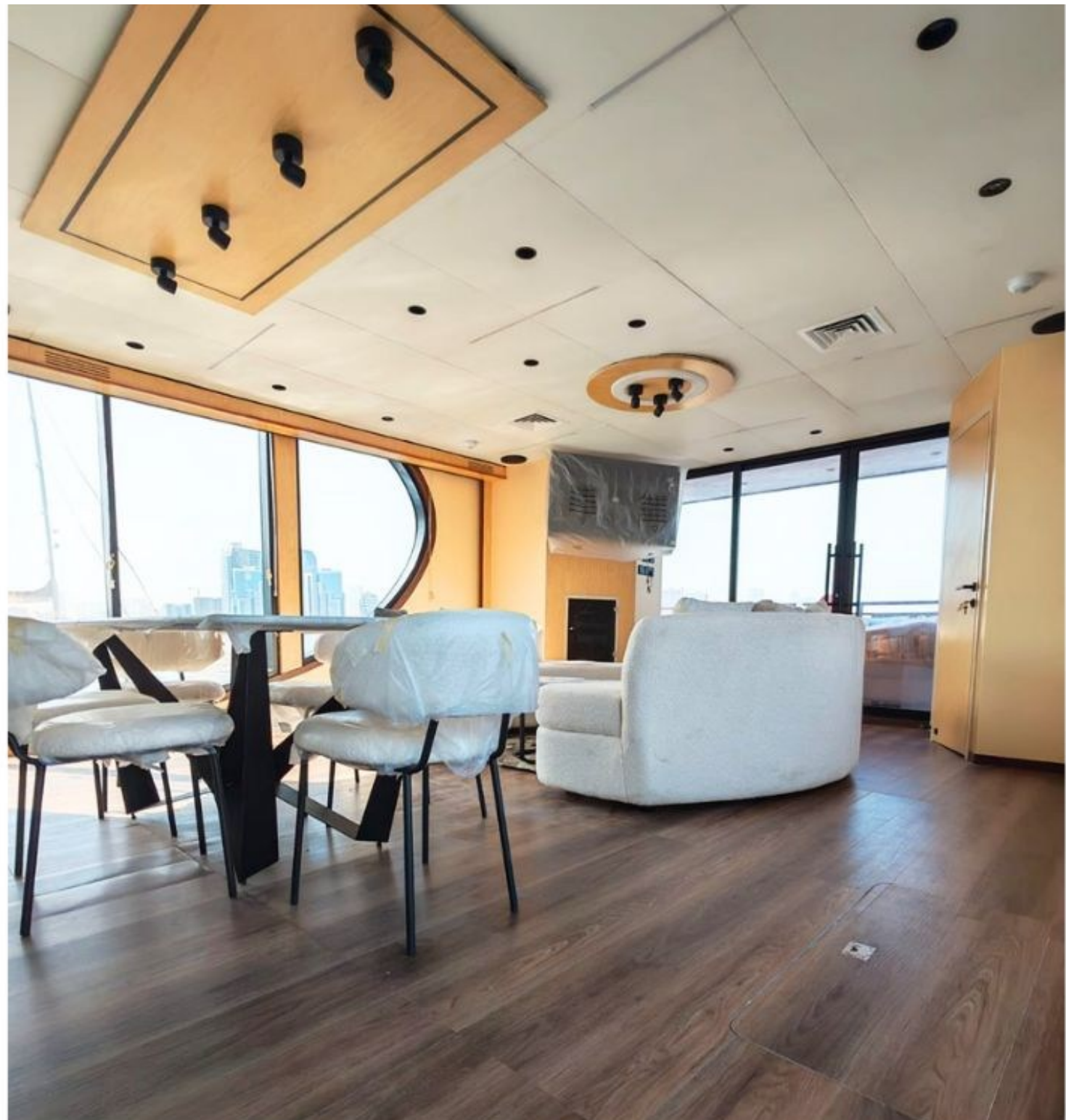












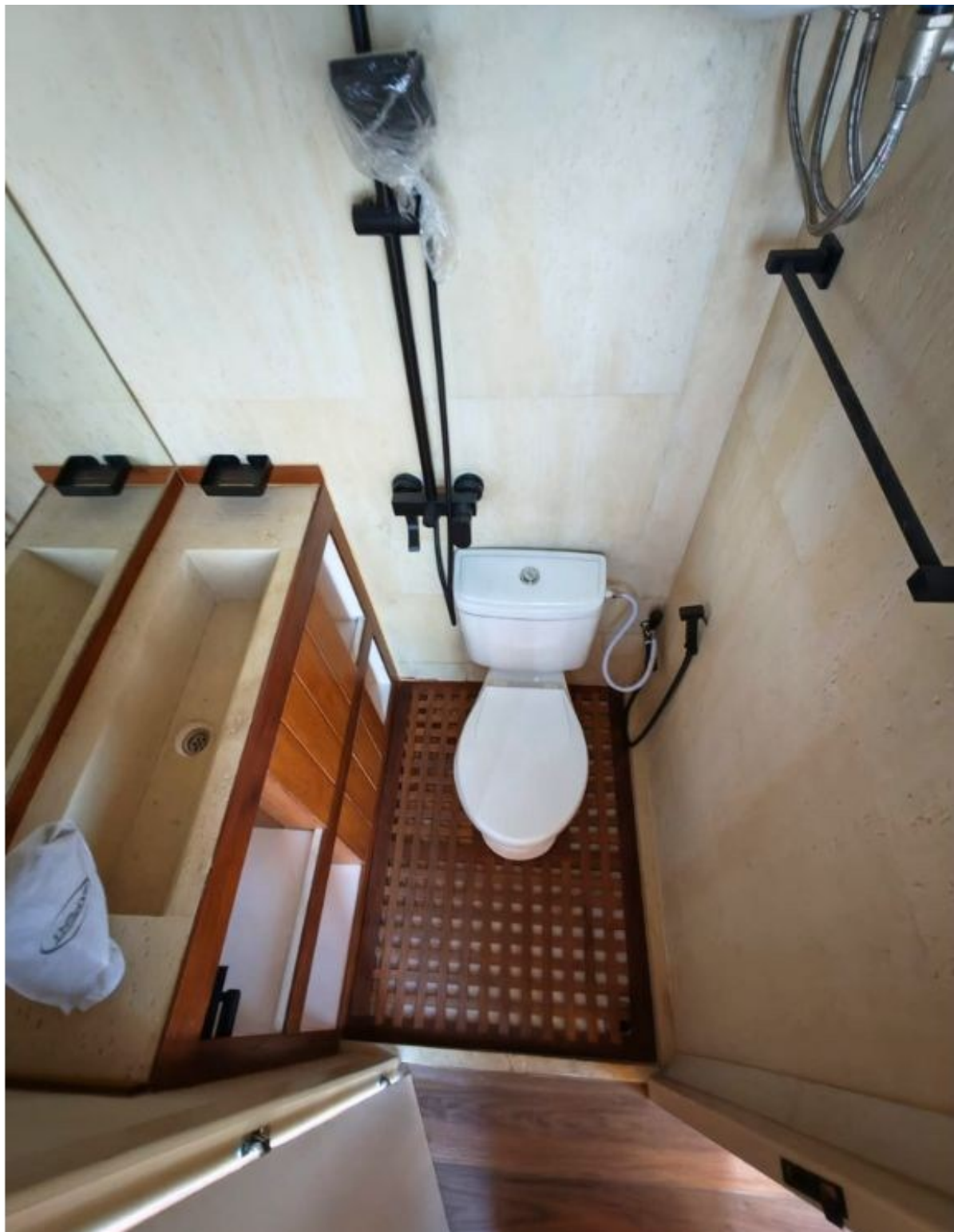














ROYAL YACHTING
MIDDLE EAST
EST 2008

CONTACT US

ROYAL YACHTING MIDDLE EAST BOAT TRADING L.L.C

Office 814, The Onyx Tower 2, The Greens, Sheikh Zayed Road
Next to EMAAR Business Park, Dubai, UAE.
P.O. Box 283741

Email Address: emirates@royalyachting.ae / sales@royalyachting.ae

Telephone Number: +971 (0) 4 399 6399 | **Fax Number:** +971 (0) 4 399 6398

Mobile Number: +971 (0) 50 467 4113

www.royalyachting.ae