

# LAPILLUS HOUSEBOAT



# LAPILLUS HOUSEBOAT



[www.royalyachting.ae](http://www.royalyachting.ae)

## YACHT FOR SALE | LAPILLUS HOUSEBOAT

<b>BUILDER:</b>	AQUATIC ARCHITECTS DESIGN STUDIO
<b>BUILT:</b>	2023   NEW PRODUCTION
<b>LENGTH OVERALL:</b>	19 METERS
<b>BEAM:</b>	7.5 METERS
<b>DRAFT:</b>	0.6 METERS
<b>STATEROOMS:</b>	2 CABIN
<b>GUESTS:</b>	TBC BERTHS
<b>FLAG:</b>	UAE
<b>HULL MATERIAL:</b>	METAL

# PRICE: 3,500,000 AED

**FOR MORE INFORMATION CONTACT ROYAL YACHTING**



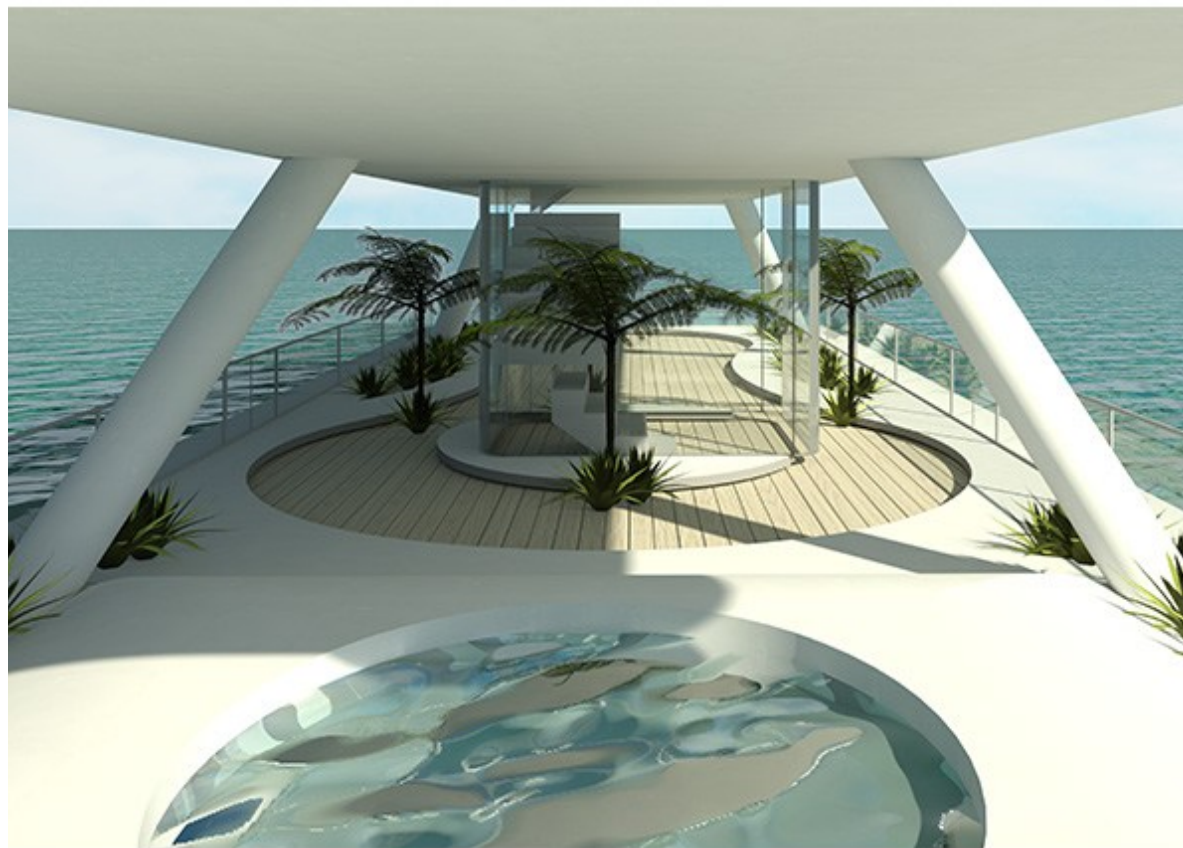
+971 (0) 4 399 6399



+971 (0) 50 467 4113 / Sales Manager



[www.royalyachting.ae](http://www.royalyachting.ae)





**BOAT DETAILS**

Type of Boat :	House Boat
Boat Builder :	Aquatic Architects Design Studio
Model :	Lapillus
Year :	2023
Hull Material :	Metal
Length Overall :	19 Meters
Beam :	7.5 Meters
Draft :	0.6 Meters
Displacement :	15 Ton
Displacement (at full load) :	45 Ton
Fuel Capacity :	700 Liters
Fresh Water Capacity :	180 Liters
Location :	Dubai

**MECHANICAL DETAILS**

Engine :	2 x Yamaha
Engine Power :	300 HP
Engine Hours :	NEW
Fuel Type :	Petrol
Propulsion :	Outboard
Maximum Speed :	10 knots
Cruising Speed :	8 knots
Generator :	Yes
Generator Details :	Fisherpanda 25KVA
Air Conditioning :	Yes
Aircon Power :	6 Tons Domestic Acs (3 Tons x 2)

**EQUIPMENTS**

BBQ Grill :	No
Jacuzzi :	Yes
Water Maker :	No
Black Water :	Yes
Outside Shower :	Yes
Water Heater :	Yes
Dish Washer :	No
Stove(s) :	Yes
Oven :	No
Microwave :	Yes
Fridge :	Yes
Freezer(s) :	Yes
Ice Maker :	Yes
Under Water Lights :	No

**ACCESSORIES**

Hard Top :	Yes
Teak Flooring :	Yes
Sundeck :	No

**ELECTRONICS**

Heel Repeater :	No
Navtec :	Yes
Satellite TV System :	Optional
Sound System :	Yes
MDVR :	Yes
TV/DVD :	Yes

**LAYOUT**

Main Saloon :	Yes
Saloon Convertible :	Yes
Number of Cabins :	2
Number of berths :	TBC
Number of Heads :	2

**COMMENTS :**  
**The Lapillus Houseboat is a product of Aquatic Architects Design Studio. Only the first three units will be sold at 3'500'000 AED and will ready in a duration of 6-9 months from date of deal struck.**

**DISCLAIMER :** In this transaction we are acting as Brokers only. Whilst every care has been taken in their preparation, the correctness of these particulars is not guaranteed. The particulars are intended as a guide only and they do not constitute a term of any contract. A prospective buyer is strongly advised to check the particulars and where appropriate to have the vessel fully surveyed and inspected.

**The yacht is a new production. The yacht is design with the following structures and equipments:**

**Structure & Body:**

Core Skeleton - Marine Grade Aluminum 6063TS (Light weight, anti-corrosive)

Exterior Shell - ACP (aluminum composite panels)

Deck and Pillars Shell - MR + FRP + Gelcoat Interior lining - MR + FRP + Gelcoat

**Pontoons: HDPE (high density polyethylene)**

Absorbs up to 800 tons of impact

No marine growth (lower maintenance cost impact)

Weight carrying capacity up to 45 Tons (15 tons/pontoon)

Internal bulkhead segregation 3m span (6 compartments each pontoon)

Diameter 1.2m

**Tanks:**

Grey Water Tanks

Diesel Tanks

Ballast Tanks

Jacuzzi water holding tank

MDVR: 360 Captain View and live tracking system

**Delivery Mode Inclusions:**

Turnkey (All inclusive FFE + Nav + Safety)

Tasneef Certified

Stability booklet (Both preliminary and Conclusive after seaworthiness testing)

User Manual

Preventative maintenance booklet

Warranties Booklet

Manufacturer 10 year warranty certificate

**Interior layout: alterations applicable non-restrictive.**

**A- Elevated Space**

Single open Majlis Space

Kitchen Space

Captain booth (potentially relocating to lower deck to segregate Marine crew flow from Majlis guests.

**B- Lower Deck**

Open multipurpose use

Landscape

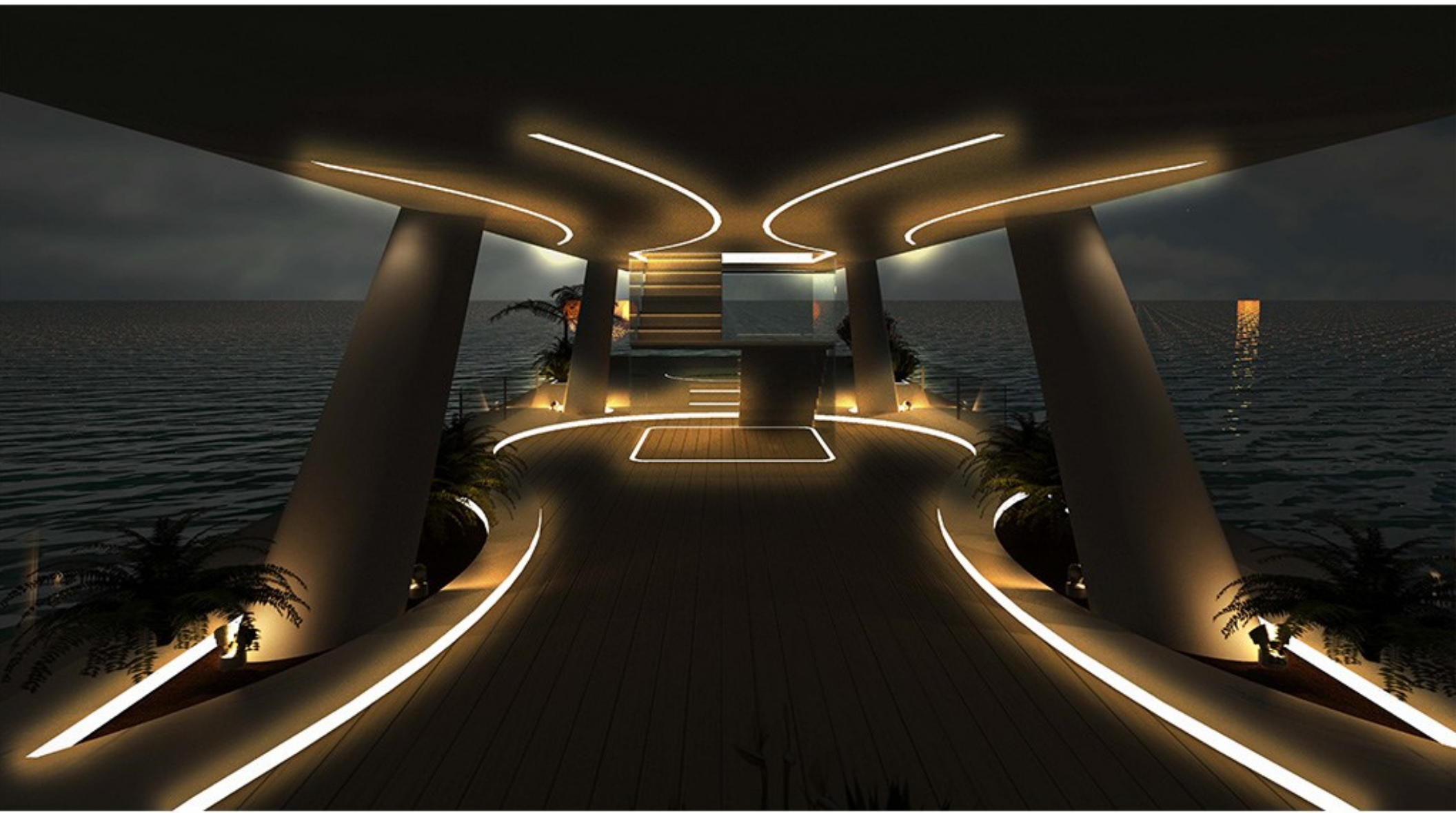
Staircase and external mechanical equipment space (elevator option can be explored)























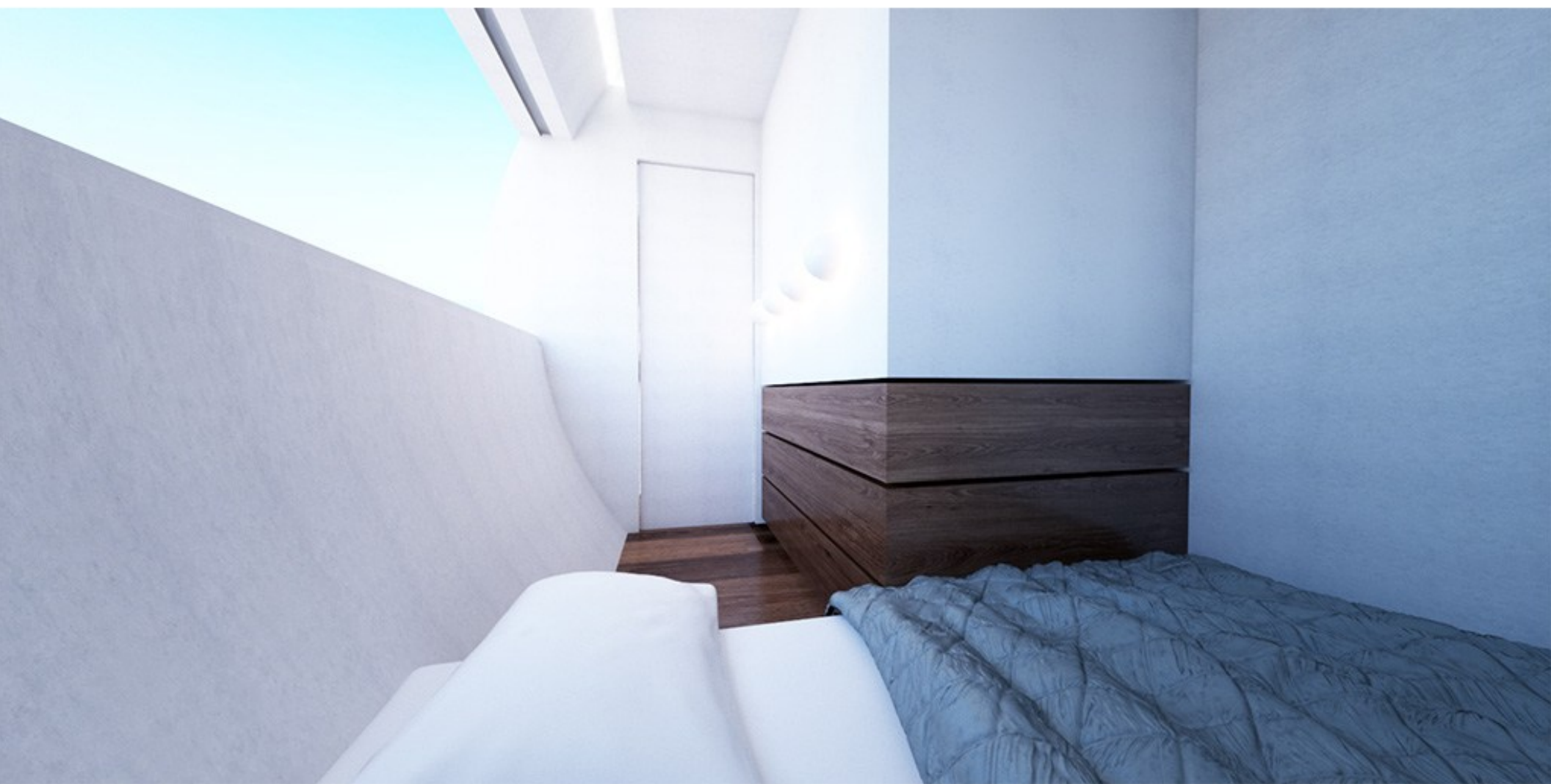




























STARBOARD VIEW



BOW VIEW



PORT SIDE VIEW



AFT VIEW

